

LED TUBES

T8
2ft, 4ft, 5ft



DRIVER AS STANDARD

T8 600mm (2ft)

Power	10W
Luminous Flux	1000lm
Colour Temperature	4000K
IP Rating	IP20
Dimensions	589.9 x 26mm
Warranty	3 Years

Part Number

NET-11-02-22

T8 1200mm (4ft)

Power	18W
Luminous Flux	1800lm
Colour Temperature	4000K
IP Rating	IP20
Dimensions	1199.4 x 26mm
Warranty	3 Years

Part Number

NET-11-02-24

T8 1500mm (5ft)

Power	24W
Luminous Flux	2400lm
Colour Temperature	4000K
IP Rating	IP20
Dimensions	1500 x 26mm
Warranty	3 Years

Part Number

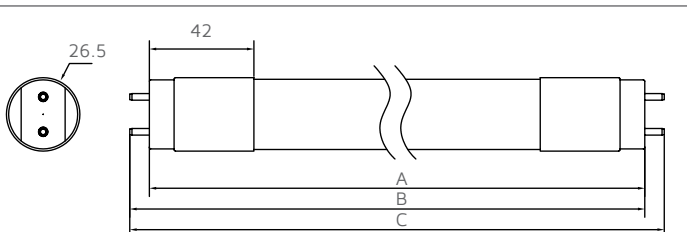
NET-11-02-26

TECHNICAL SPECIFICATIONS (ALL MODELS)

Input Voltage AC	100-240V
Power Factor	>0.90
Luminaire Efficacy	>100lm/W
LED Manufacturer	Honglitronic
LED Type	SMD 2835
Driver Manufacturer	HYD
Driver Output Voltage DC	60-110V
Electrical Class	2
Colour Rendering	>80 CRI
Lamp Viewing Angle	340°
Dimmable	No
Operating Temp.	-15°C to +45°C
Lifespan _{L80}	35,000 Hours
Fire Rating	V-2
UGR Rating	22
End Cap Style	G13
Diffuser Material	Polycarbonate
Housing Material	Polycarbonate

IES Data Files available

DIMENSIONS



Part Number	Dim A	Dim B	Dim C
NET-11-02-21	589.9	595.7	604.0
NET-11-02-23	1199.4	1205.3	1213.6
NET-11-012-24	1500.0	1505.9	1514.2

All units are in mm