

NET LED LIGHTING

Installation Guide for 2D NET LED Lamps

Remember - Safety First!

Any electrical work should be undertaken by a licensed electrician. Do not modify the internal elements of your lighting fixture unless you are a qualified electrician. When installing 2D NET LED Lamps please follow safe practices, including ensuring that you are on a safe height platform and that you turn off all power to the fixture.

Remove Existing Electrical Components

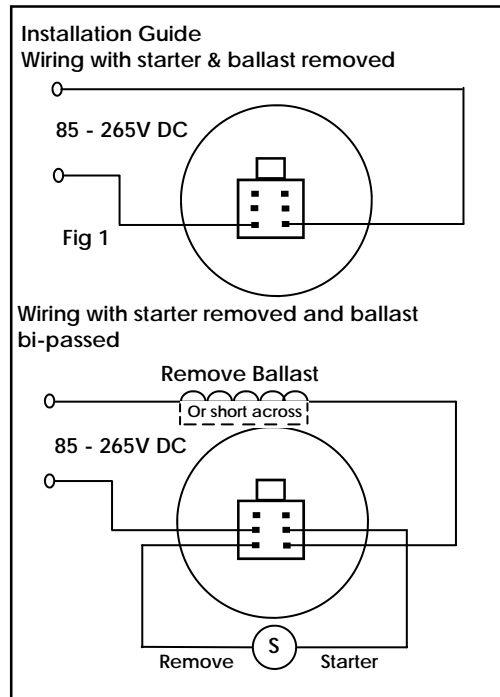
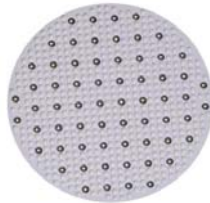
There are two types of light fixtures which are the most commonly used: Magnetic Ballast and Electronic Ballast. Magnetic ballasts are the most common fixture. The easiest way to tell which light fixture you have is by looking for a 'Starter'.

Light fixture WITH Starter: You have a magnetic ballast.

Light fixture WITHOUT Starter: You have an electronic ballast, or a very outdated fixture.

Whilst it is not essential to remove a magnetic style ballast we do recommend that in both cases all the control gear is removed / bypassed thus ensuring the maximum possible energy savings from the installation of your 2D NET LED Lamp.

1.	Turn all light fixtures off at the supply before starting the installation
2.	Remove your old fluorescent 2D tube
3.	Remove the starter; usually by twisting it anti-clockwise and pulling it out
4.	Remove/bypass the ballast (s) and short together the input and output wires that were connected to the ballast
5.	Simply install your new 2D NET LED Lamp (s) ensuring it is securely located.
6.	Turn on your 2D NET LED Lamps (s) and enjoy instant economical and environmentally friendly illumination



A qualified electrician will be required to remove / bypass the ballast from the light fitting. If the fitting contains any additional control gear or power factor correction capacitors we recommend that these are all removed and the circuit rewired to represent that shown in Fig 1.

N.B. 2D NET LED Lamps cannot be used in emergency light fittings.

N.B. Caution: Installation of a 2D NET LED Lamp without making the above changes to the existing fitting will result in damage/failure of the lamp .

N E Technology Limited

St John's Innovation Centre : Cowley Road : Cambridge : CB4 0WS

Tel: 01223 851505 Fax: 01223 851506 Email: info@netledlighting.co.uk Web: www.netledlighting.co.uk